

Operating Instructions for Hot-Melt Glue Gun

MS 150 Glue Gun



Table of Contents

Product Description	3
Trouble-Shooting	4
General Safety Instructions	5
Start-up	7
Operation	9
Additional Information	10
EC-Conformity Certificate	11
Exploded Views	12
Spare Parts Legend	13

Dear customer,

The glue gun you purchased will help you to glue parts together more easily and more rapidly. Before using the gun, please read these instructions thoroughly.

Product Description

Proper Use

The gun works with and dispenses hot glue. Therefore, the glue gun should only be used by qualified people. Handling the gun properly will save you unnecessary accident hazards and problems.

Personal injury or material damage caused by an improper use of the Hot-Melt Glue Gun shall not be the manufacturer's but the user's responsibility.

Technical Data

Connection	230 V/120 V
Heating capacity	200 W
Temperature control	thermostat
Temperature control range	approx. 70 – 190°C
Heat-up time	approx. 10min
Tank capacity	150 g
Max. application per min.	100 g
Weight hand gun	1200 g

Accessories

- **Special nozzles available on request.** Please ask for our accessory nozzle leaflet.

Trouble-Shooting

Survey on Possible Fault Signals and Assistance in Trouble-Shooting

In case of damage, send glue gun to Reka. We shall not be responsible for any repair made by the customer.

Problems	Possible Causes/ Faulty Operation	Trouble-Shooting
No or too little glue comes off though the heat-up time has been exactly observed	<ul style="list-style-type: none"> • clogged nozzle • temperature too low 	<ul style="list-style-type: none"> • unscrew nozzle, clean or replace it • check temperature
Glue is too fluid or too consistent	<ul style="list-style-type: none"> • temperature too high or too low 	<ul style="list-style-type: none"> • check temperature
Glue leaks out of nozzle	<ul style="list-style-type: none"> • clogged nozzle 	<ul style="list-style-type: none"> • unscrew nozzle, clean it carefully or replace it. Unscrew nozzle at working temperature, wear gloves (risk of burning).
No temperature	<ul style="list-style-type: none"> • gun switched off 	<ul style="list-style-type: none"> • connect plug to socket properly. • If necessary, return gun to Reka

General Safety Instructions

User's Care and Diligence

The Glue Gun has been designed and fabricated according to the applicable harmonized standards and further technical specifications. So, it is state of art and ensures a maximum of safety.

This safety, however, can only be achieved in practice, if all necessary measures have been taken. The user of the device shall be obliged to plan these measures and to make sure that they are taken.

In particular, the user shall ensure that

- the gun is in working order
- the required personal protective equipment (protective gloves) for the operating personnel is available and used
- the entire operating instructions are in legible condition and available to the operator
- only sufficiently qualified and authorized personnel operates and maintains the gun
- this personnel is regularly instructed in the applicable aspects of operational safety and environmental protection, and knows the operating instructions and, in particular, the safety instructions.

Make the information available:

This operating manual shall be kept on the site of operation. It must be ensured that all persons operating the gun can look into the manual at any time. In addition to the operating manual, the instructions pursuant to the Factory Act and the regulations as regards the use of equipment shall always be at the operator's disposal.

Meaning of the Various Safety Symbols

This operating manual shall give concrete advice as to safety to draw the user's attention to remaining unavoidable hazards. These hazards imply dangers to

- persons
- product and equipment

The symbols used in the operation manual shall, in particular, call attention to the safety instructions!



This symbol indicates that there is, above all, danger to persons, but also to equipment and material.

Caution: Hot surface!

Accident Prevention Regulations VBG 125 - W26

Hot surfaces such as machine parts, tanks or materials, but also hot liquids cannot always be perceived. The utmost caution is advised when this symbol is attached to a component.

Always wear protective gloves when you have to touch hot surfaces!

Safety Measures in Case of Normal Operation

The instrument must only be used by persons trained and instructed and being allowed to use it. They have to know the operating instructions and be able to work accordingly.

Prior to each use, check the gun for visible damage and make sure that it is in perfect condition!
Advise detected defects to your superior at once!



Safety Instructions for the Use of the Hot-Melt Glue Gun MS 150

- Always follow the accident prevention regulation **VBG 81 - Processing of Glues** issued by the Professional Association of the Chemical Industry
- Fill gun only just under the charging hole.
- **All visible material parts may warm up to 250 °C !**
- Never exceed working temperature of the hot melt.
Overheating may lead to decomposition which may affect health.
- Never start working without having mounted a nozzle.
- **Do not direct glue jet towards people.**
- Prior to any nozzle replacement, unplug connecting cable.
- When a nozzle is replaced, liquid glue may leak out. **Warning: Risk of burning!**
- Never bring the hot nozzle in contact with the cable.
- Ensure sufficient ventilation.
- Do not inhale vapour escaping from the glue. **Attention: inhaling this vapour may cause irritations of the respiratory tract.**
- **When your skin got into contact with hot glue, cool it with cold water immediately. Do not try to remove hot melt from the skin first. If necessary consult your doctor.**
- **When hot adhesive got into your eyes, immediately cool them under running water for about 15 minutes and consult your doctor at once!**
- **Never work without protective gloves and glasses!**
- **Never fill in any solvents or paraffines to avoid risk of explosion.**

- Note:**
- Do not lay gun on its side
 - Never overcharge gun
 - Press trigger only when gun is heated
 - Before you change the glue type, pump residual quantity out of the nozzle
 - Do not direct glue jet towards people
 - Do not carry out overhead work
 - Do not hold nozzle top upward
 - Never work without having mounted a nozzle
 - Stop using the gun, if casing is damaged due to shock, breakage or heavy wear.

Start-up and Operation

To avoid risk of stumbling:

Lay all instrument connections (cable, hoses, and lines) so that they do not cause any risk of stumbling (cable conduits, bridges)!

Operation of the Glue Gun

Plug connecting cable of MS 150 Glue Gun into socket with earthing contact.

Adjust working temperature requested. The temperature of the MS 150 Glue Gun is infinitely adjustable between approx. 70 and approx. 190 °C. For this, set rotary button to the requested position:

4	≡	approx. 70 °C	10	≡	approx. 160 °C
6	≡	approx. 100 °C	12	≡	approx. 190 °C

Minor leaking during the heat-up phase is due to hot melt expanding in the nozzle/heating chamber.

**Warning: Once the gun has warmed up, nozzle and cover are extremely hot!
Never work without wearing protective gloves!**

Loading of Glue

- The MS 150 Glue Gun is designed for applying solvent-free hot melts. Never fill the gun with other materials. The hot-melt glue gun can work with all the types of hot melts that are designed for working temperatures of up to max. 200 °C.
- As soon as the gun has warmed up (approx. 10 min.), open cover and fill granulate into the gun till it appears just under the rim of the charging hole.
- Close cover and allow some time for the glue gun to melt the glue (approx. 10 min. depending on type of glue).
- The quantity to be applied can be determined by pressing the trigger: the longer you press, the more glue comes out.

The cover must only be opened when the gun has warmed up!

Application of Hot Melts

Only start glueing, when the glue has properly molten.

Make yourself familiar with the instrument first. Apply a little glue in varying forms (small, large dots) on a piece of paper or cardboard. This is very easy.

Observe the correct working temperatures of the individual hot melts.

**Never start working without having mounted a nozzle!
Press the trigger only when gun has warmed up!**

Nozzle Replacement

Only replace nozzles when the glue gun is warm (instrument temperature 60 - 80 °C) and empty. You are advised to wear protective gloves.



Prior to exchanging nozzles, unplug connecting cable!

Replacing a cold nozzle may damage the gun. If the nozzle is replaced when it is too hot, liquid adhesive may leak out.



Attention: Risk of burning!

- When your skin got into contact with hot glue, cool it immediately with cold water.
- Do not try to remove hot melt from the skin first. If necessary, consult your doctor.
- When hot adhesive got into your eyes, immediately cool them under running water for about 15 minutes.

Consult your doctor at once!



**Never start working without having mounted a nozzle!
Do not direct glue jet towards people!**

Operation

The glue gun shall only be used/applied according to its intended use. Please see Section "General Safety Instructions".

Improper use of the gun may cause personal injury or material damage.

Non-observance of the safety instructions when working with the gun may lead to serious burns.

Make a functional test acc. to the following list, before you switch on the glue gun:

Check List

- Is the glue gun connected to 230/120 volts?
- Is the nozzle clean and free of any foreign matters?
- Is solvent-free hot melt in the gun?
- Has the heat-up time of approx. 10 minutes (depending on the glue type) been observed?

While you are working...

...the glue gun must always be deposited on the wire strap.

Never lay gun on its side!

- Open gun only if required; cover can only be opened while gun is warm.
- Keep hot melt free of dirt and humidity.

General Hints

- Do not start glueing before glue is fluid.
- Glues that have not molten completely will not reach the glueing temperature required.
- Not having the required glueing temperature, glues cannot produce optimum glueing results.
- Due to the high viscosity of partly molten glues a lot of manual energy will be needed to dispense them.
- This will cause some essential parts of the gun to wear very fast .



Always deposit glue gun on the wire strap provided for this purpose. Never lay glue gun on its side!

- Note:**
- Do not lay glue gun on its side
 - Never overcharge gun
 - Do not direct glue jet towards people
 - Do not hold nozzle top upwards
 - Do not carry out overhead work
 - Never exceed working temperature of the glue
 - Stop using the gun, if casing is damaged due to shock, breakage or heavy wear.

Only fill clean and solvent-free glue into the gun. Contaminated glue, nails, clamps, sand, etc. cause malfunctions. The use of solvents, petrol, benzole, toluol, acetone, terpentine, etc. will lead to an explosion. Never use these materials!

If you observe the operating instructions, the gun does normally not need cleaning.

If the gun is used very often, it has to be maintained regularly. To set a date, please call our service department.

Additional Information

Do you have any more questions or requests? We should be glad to help you.

Please contact us at phone no. ++49-721-970 780 / Fax ++49-721-705 069

Our mailing address is:

Reka Klebetechnik GmbH & Co. KG.
Siemensstr. 6

D - 76344 Eggenstein

e-mail: info@reka-klebetechnik.de

Internet: www.reka-klebetechnik.de

EC-Conformity Certificate

acc. to EC Guideline 89/392/EEC, Supplement IIA

This is to certify that the below-described machine, as regards its design and type, as well as the construction sold by us, is in conformity with the relevant safety and health regulations of the EC guideline.

Description of the machine	:	MS 150 Glue Gun
Intended use	:	Application of solvent-free hot melts
Type of machine	:	MS 150
Serial number	:

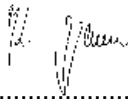
Design modifications influencing the technical data specified in the operating manual and the intended use, thus meaning a considerable change of the device, render this conformity certificate invalid!

Relevant EC guideline : EC Machine Guideline (89/392/EEC)
Amendment of Machine Guideline
(91/368/EEC)

The following harmonized standards have been applied : EN 60204 Part 1 (DIN VDE 0113 Part 1)
EN 292 Parts 1 and 2, EN 349, EN 294

An original version of the operating instructions for the glue gun, in the national language of the user - here English - is enclosed.

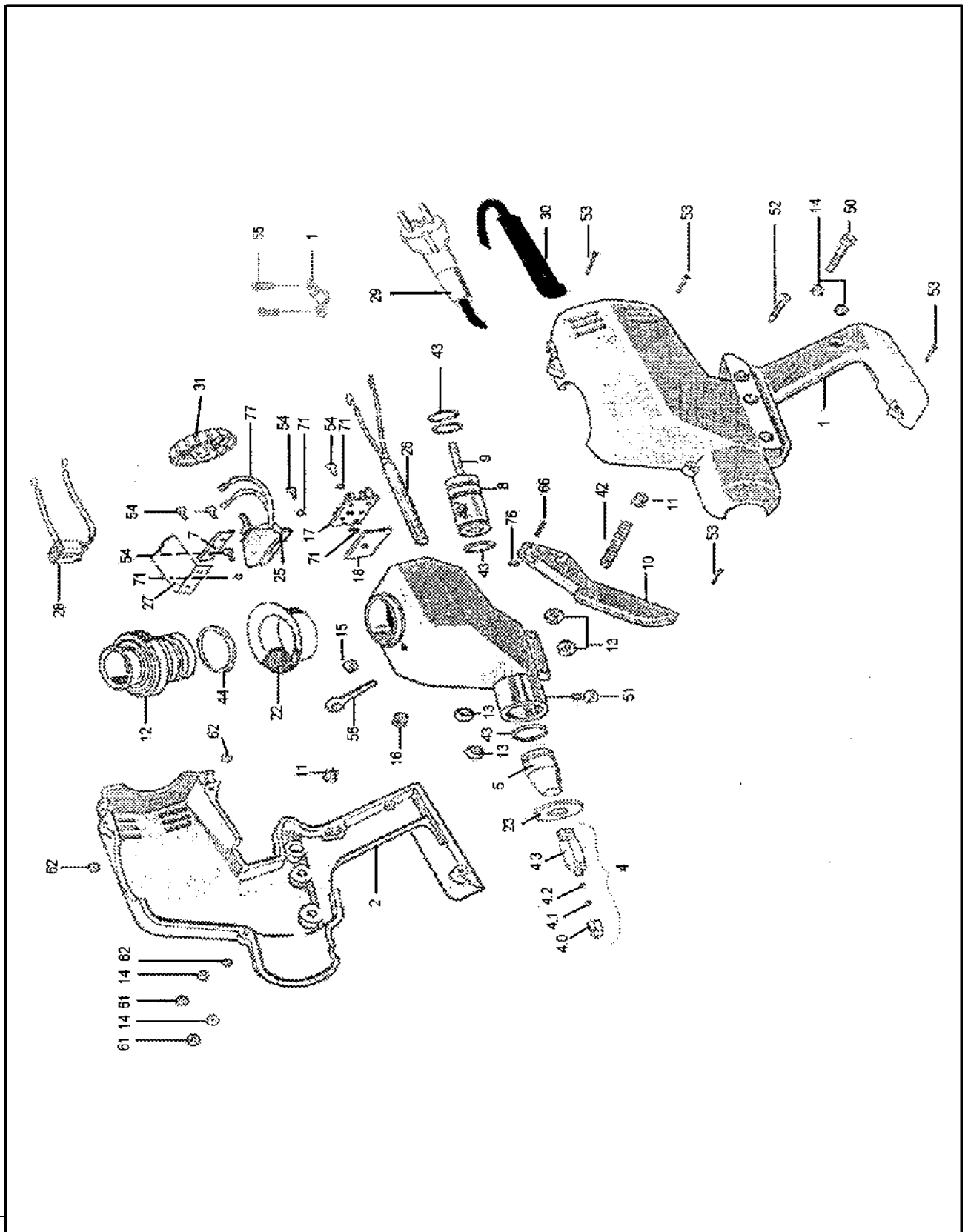
Place / manufacturer : 76344 Eggenstein Reka Klebetechnik GmbH & Co. KG
Siemensstr. 6
Date : December 2001 D-76344 Eggenstein

Signatures : 
.....
Karl Coenen
Product manager

Ersatzteilliste / Spare Parts

MS 150

01.02.2002



Vorbehaltlich technischer Änderungen

	Hübner	Reka		
1	2784-00	3751	Gehäuseschale links	Casing part left
2	2786-00	3752	Gehäuseschale rechts	Casing part right
4	2791-00	3911	Düse Nr. 2 AG kpl.	Nozzle no. 2 male
4.0	2895-00	3909	Düsenspitze Nr. 2	Nozzle Top
4.1	2156-00	3789	Feder Düse	Spring
4.2	2816-00	3757	Kugel	Ball
4.3	2795-00	3910	Düsenhalter	Nozzle holder
5	2793-00	3759	Austrittstück IG	Exit piece female
7	2796-00	3761	Schiene	Rule
8	2797-00	3762	Kolben kpl.	Piston cpl.
9	2936-00	3763	Kolbenstange	Piston Rod
10	2783-00	3764	Abzughebel kpl.	Trigger cpl.
			Besteht aus:	Consists of:
	2981-02	3820	Abzughebel	Trigger
	2873-00	3851	Knebelkerbstift	
11	2804-00	3765	Lagerbuchse	Bearing Bush
12	2805-00	3766	Deckel kpl.	Lid cpl.
13	2807-00	3767	Isolierbuchse	Insulating Bush
14	2808-00	3768	Isolierscheibe	Insulating Disc
15	2809-00	3769	Abstandshülse	Distance Sleeve
16	2810-00	3770	Abstandshülse	Distance Sleeve
17	2812-00	3771	Steckplatte kpl	Connector plate
18	2813-00	3772	Isolierplatte	Insulating plate
19	2814-00	3773	Paßstück	Adaptor
20	2815-00	3774	Deckelblech	Cover plate
22	2817-00	3775	Kragen	Collar
23	2819-00	3776	Scheibe	Washer
25	2821-00	3889	Anlegethermostat	Thermostat
26	2823-00	3778	Heizpatrone 220 V	Heating element 220 V
-,	2824-00	3779	Heizpatrone 110 V	Heating element 110 V
27	2825-00	3780	Schürze	Protector
28	2826-00	3781	Kontroll-Leuchte 220 V	Indicator lamp 220 V
-,	2827-00	3782	Kontroll-Leuchte 110 V	Indicator lamp 110 V
29	2828-00	3783	Netzkabel	Cord with plug
30	2829-00	3785	Knickschutztülle	Bend protection
31	2830-00	3959	Drehknopf	Adjusting knob
37	2837-00	3787	Kabelschelle	Clamp
42	2842-00	3790	Druckfeder	Pressure spring
43	2843-00	3791	O - Ring	O-ring
44	2157-00	3827	O - Ring	O-ring
50	2851-00	3793	Zylinderschraube	Cyl. Screw
51	2852-00	3794	Zylinderschraube	Cyl. Screw
52	2854-00	3795	Blechschrabe	Tapping screw
53	2855-00	3796	Kreuzschlitzschr.	Screw 3x18
54	2857-00	3797	Zyl.schraube	Cyl. Screw
55	2859-00	3798	Kreuzschlitzschr.	Screw 3x16
56	2860-00	3799	Augenschraube	Screw
61	2866-00	3800	Sechskantmutter	Nut
62	2867-00	3801	Sechskantmutter	Nut
66	2871-00	3802	Halbrundniet	Rivet
71	2864-00	3803	Fächerscheibe	Washer
76*	2978-00	3818	Zackenring	Ring

Vorbehaltlich technischer Änderungen